

InduSoft PAC Quick Start

Version 1.1.0, 2017/06/08

Warranty

All products manufactured by ICP DAS are under warranty regarding defective materials for a period of one year, beginning from the date of delivery to the original purchaser.

Warning

ICP DAS assumes no liability for any damage resulting from the use of this product. ICP DAS reserves the right to change this manual at any time without notice. The information furnished by ICP DAS is believed to be accurate and reliable. However, no responsibility is assumed by ICP DAS for its use, not for any infringements of patents or other rights of third parties resulting from its use.

Copyright

Copyright © 2015 by ICP DAS Co., Ltd. All rights are reserved.

Trademark

The names used for identification only may be registered trademarks of their respective companies.

Contact US

If you have any problem, please feel free to contact us.

You can contact us for quick response.

Email: service@icpdas.com

Contents

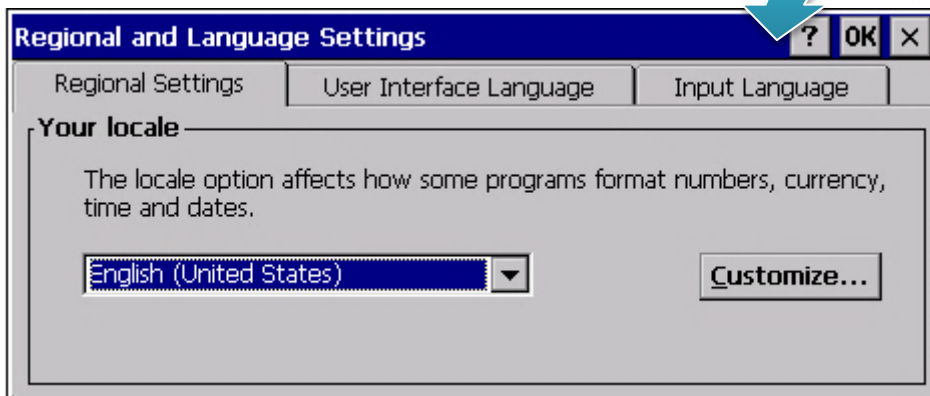
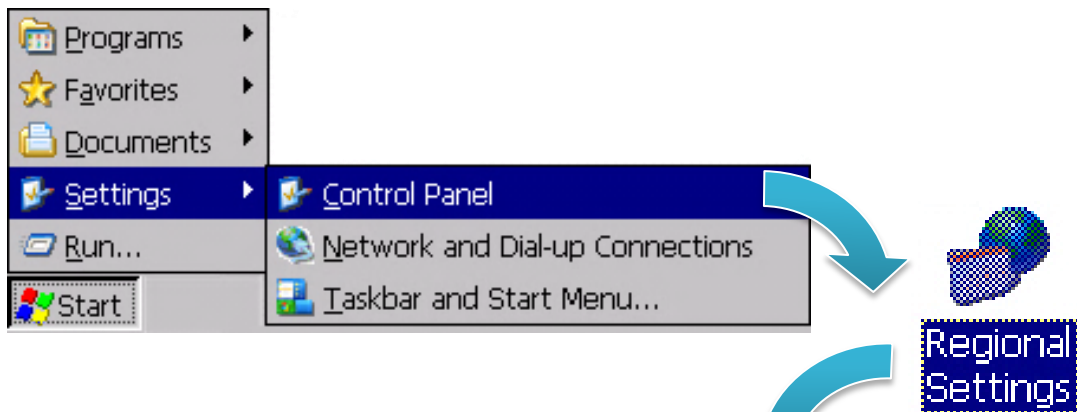
Contents	3
1. Changing User Interface Language	4
1.1. Windows Embedded Compact	5
1.2. Windows Embedded Standard	7
2. Download InduSoft Project to PAC	9
3. Using PAC Utility to Manage PAC	12
3.1. Functions of PAC Utility	13
3.1.1. Menu Bar – File	14
3.1.2. Property Tab – IP Config	15
3.1.3. Property Tab – Network	16
3.1.4. Property Tab – Device Information	18
3.1.5. Property Tab – Auto Execution	19
4. Update InduSoft Runtime Folder	20
5. Run Your Project	22
5.1. Windows Embedded Compact	23
5.2. Windows Embedded Standard	24

1. Changing User Interface Language

The following steps are applied to Windows CE 5/6/7 platform. Windows Embedded Standard platform please skip to page 7

1.1. Windows Embedded Compact

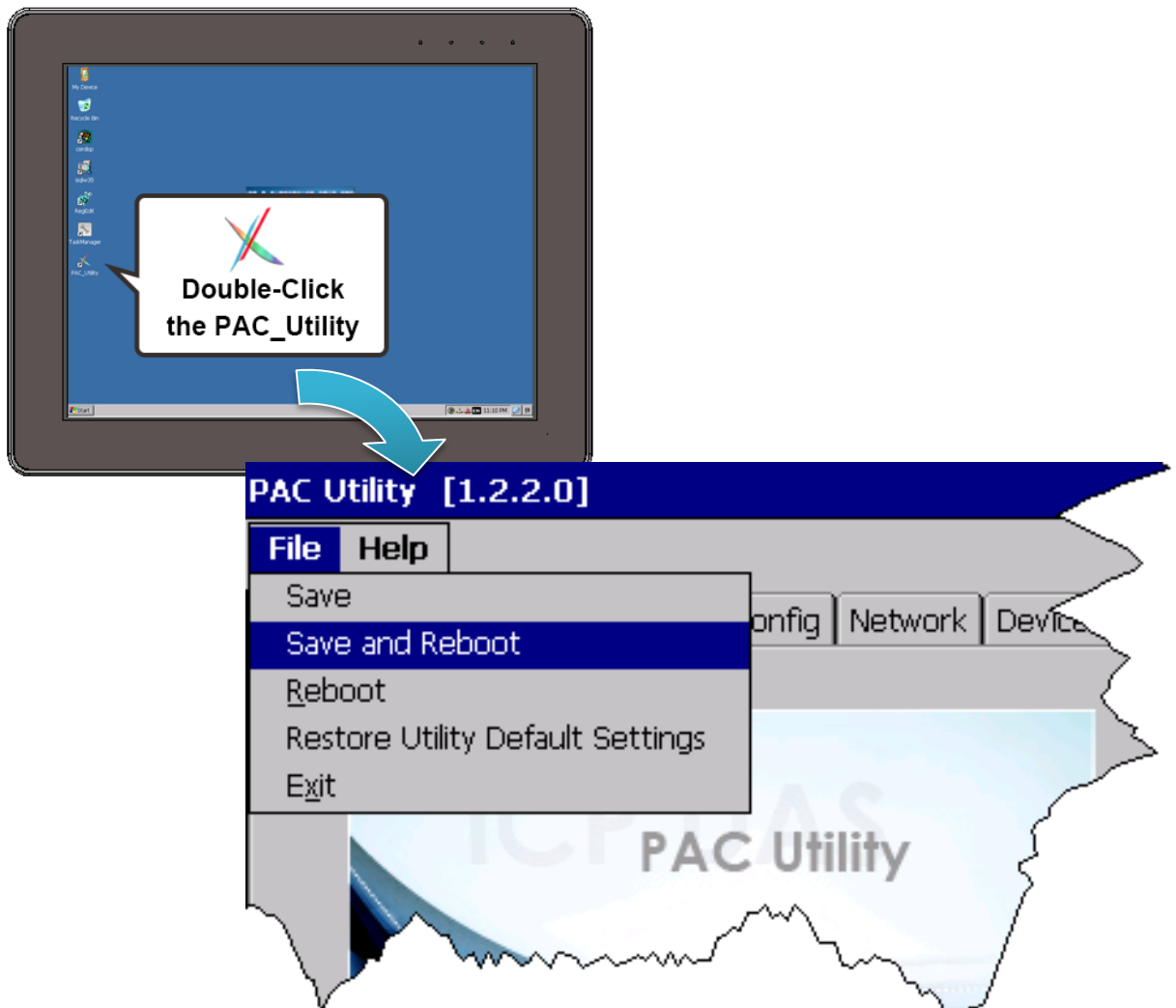
Step 1: Click “Start” menu then select “Settings”→ “Control Panel” → Select “Regional Settings”



Step 2: Click “User Interface Language tab”, select any language which you want then click “OK” button



Step 3: Execute PAC Utility and reboot PAC to apply the new configuration



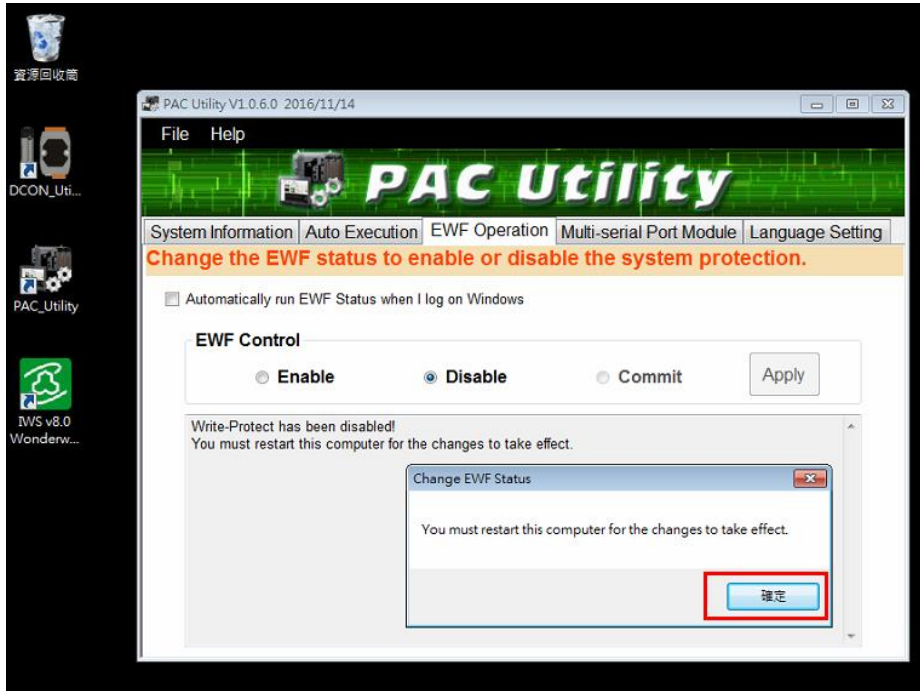
1.2. Windows Embedded Standard

Note: The following steps are applied to Windows Embedded Standard platform. Windows CE platform please skip to page 5. Please turn off EWF before changing any system setting.

Step1 : Double-click the shortcut of PAC Utility on the desktop → EWF Operation tab → Disable → **[Apply] → **[Yes]****

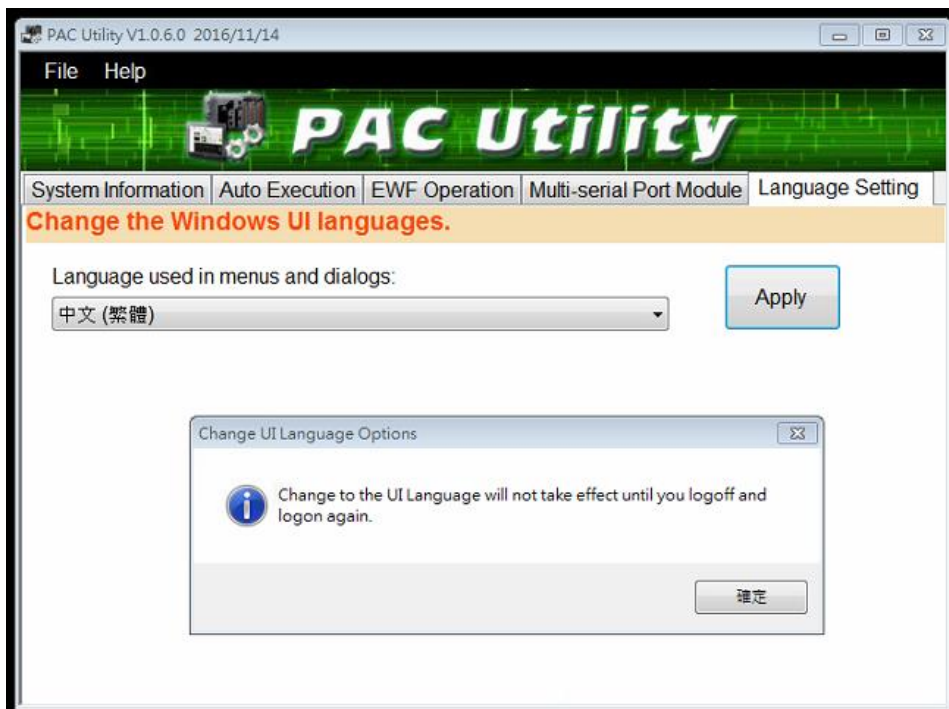


Step2 : Click **[Yes] to reboot computer**



Step3 : Reboot

Step4 : Double-click PAC Utility shortcut → Language Setting → choose your language → 【Apply】 → 【Yes】



Step5 : Reboot your computer or re-login windows.

2. Download InduSoft Project to PAC

This chapter will show you how to download your InduSoft project to InduSoft PAC and run it. Please follow the below steps.

Step 1 : Please refer to chapter 3.1.2 to set PAC's IP address, and check the connection status between PAC and PC.

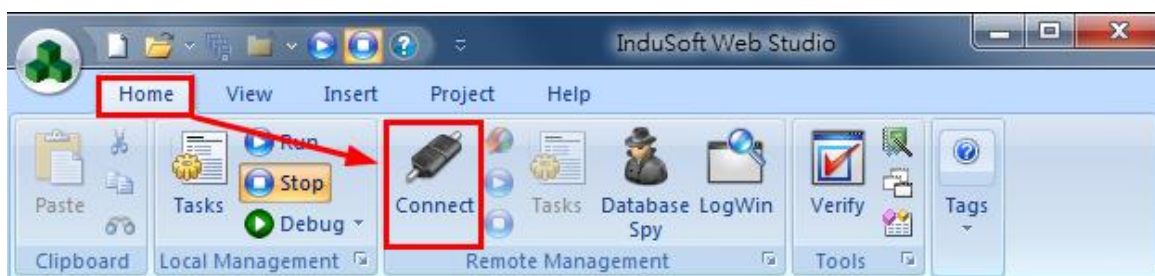
Step 2 : Execute InduSoft agent, **CEServer.exe**, which is at \Micro_SD\InduSoft\ or \System_Disk2\InduSoft\

Step 3 : The current IP of PAC will show in the bottom of CESerer.exe.

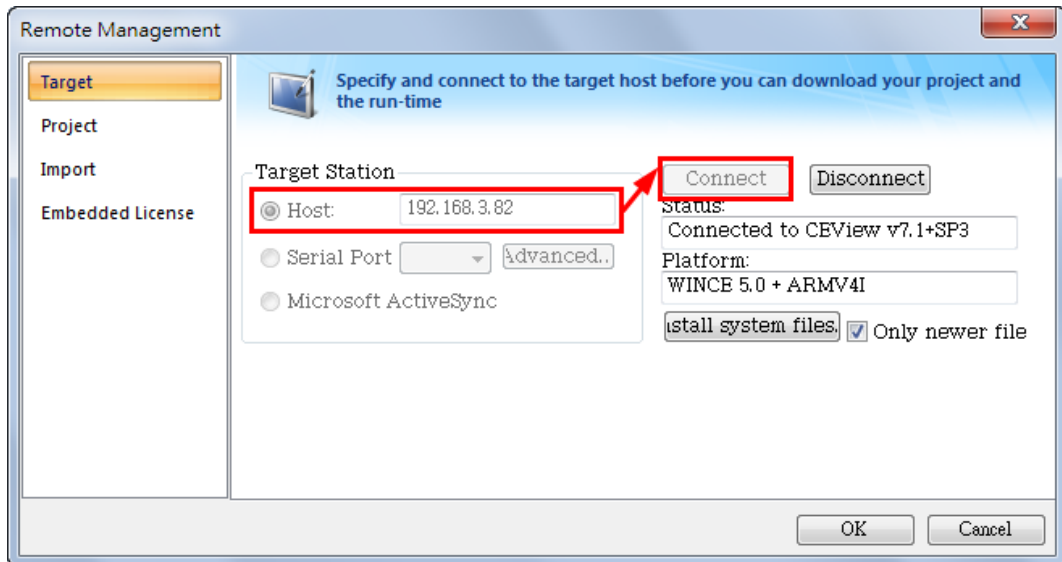


Step 4 : Launch your InduSoft project on PC.

Step 5 : Select **Ribbon** → **Home** → **Remote Management** → **Connect**



Step 6 : Type PAC's IP address in the "Host" field (example : 192.168.0.244), then click "Connect" button. After the connection is successful, the "Status" and "Platform" fields will show PAC's information.

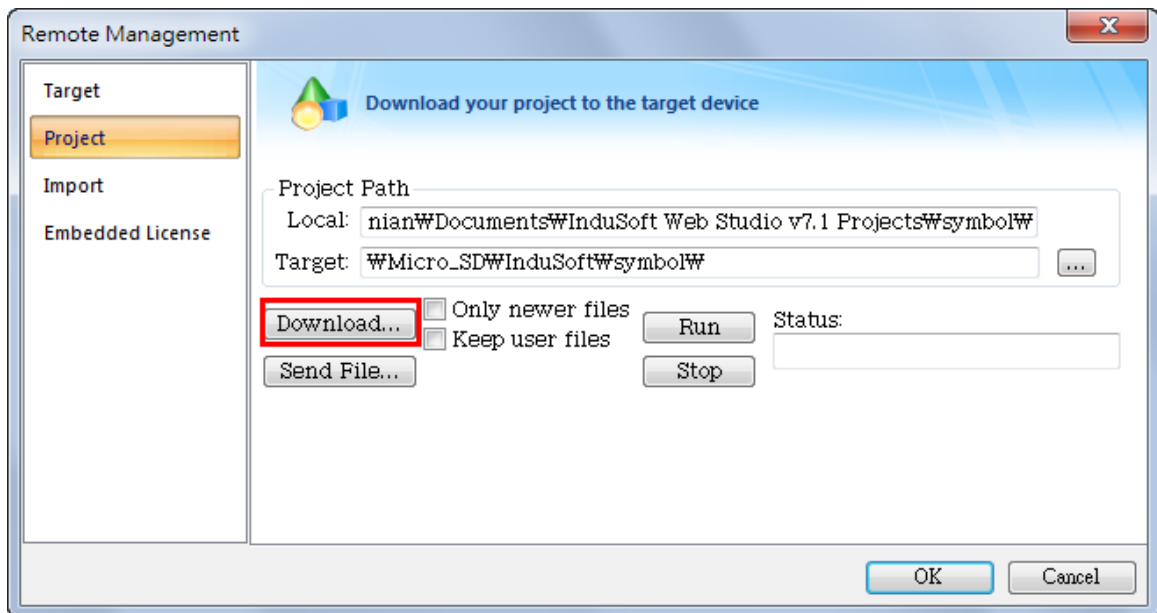


Step 7 : Select “Project” tab.

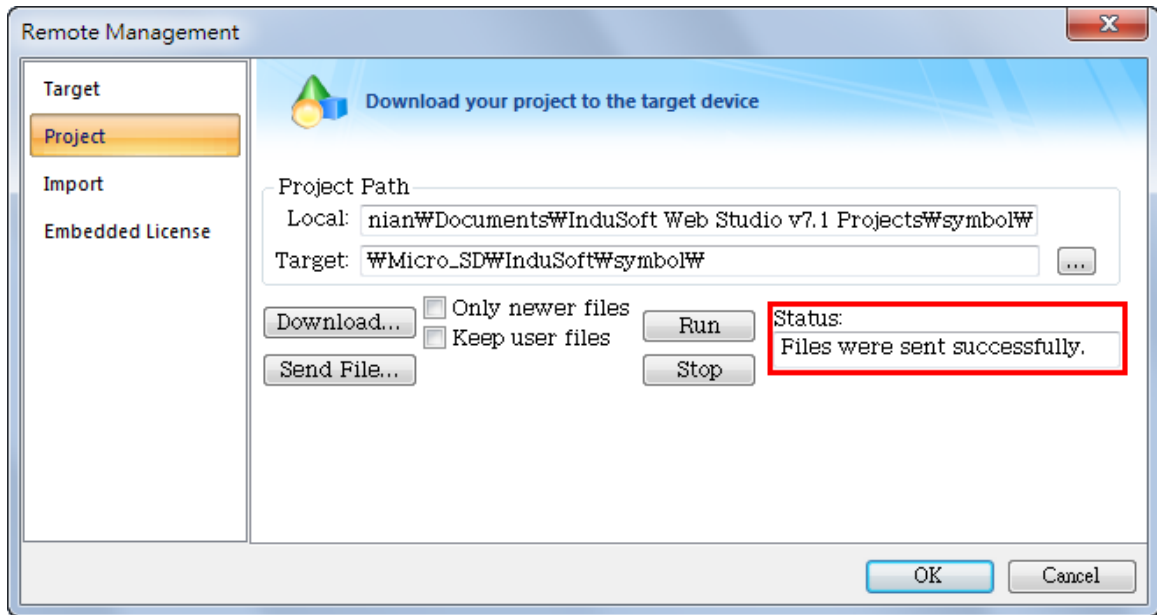
(1)“Local” field : Show the location of user’s InduSoft project.

(2)“Target” field : Show the destination where the project will be download to.

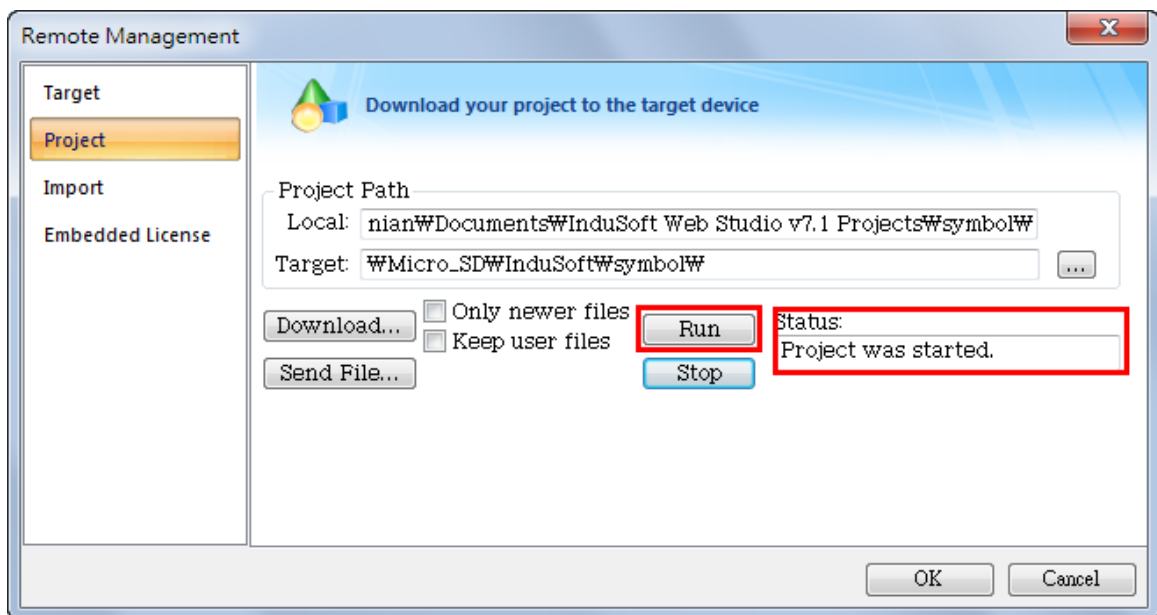
=> Click “Download...” button to download InduSoft project.



Step 8 : The “Files were sent successfully” message will show in the “Status” field when the downloading process finished.



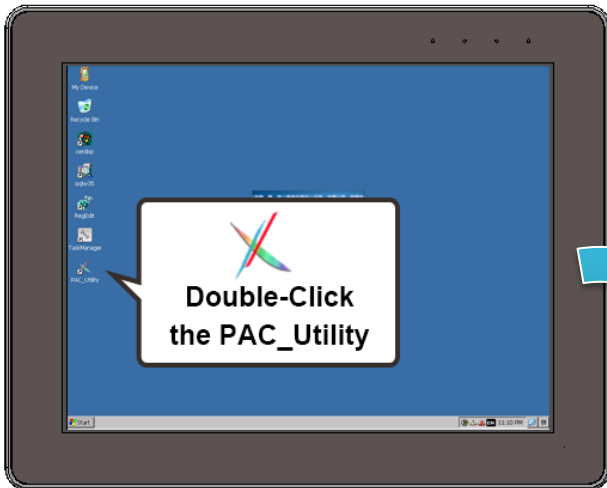
Step 9 : Push “Run” button to execute InduSoft project in PAC. If success, the “Status” field will show “Project was started” message. If clicking the “Stop” button, it will stop InduSoft project in PAC.



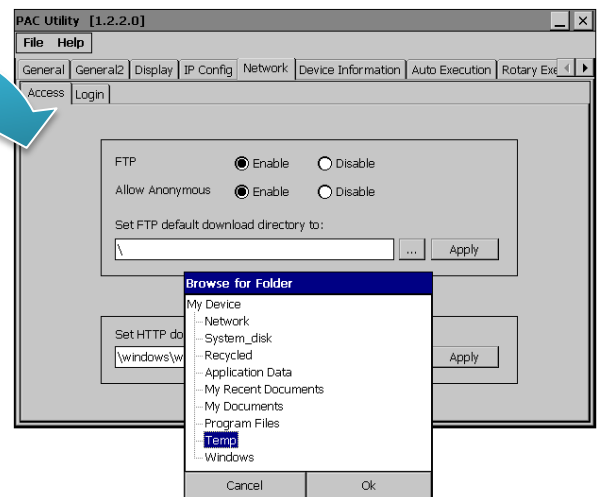
3. Using PAC Utility to Manage PAC

The PAC Utility allows user to configure and manage your PAC quickly and easily.

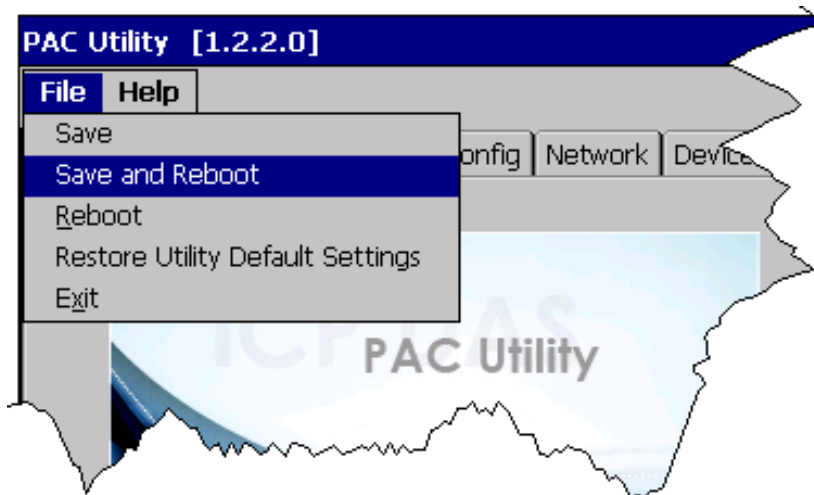
Step 1: Double-click the PAC Utility on the desktop



Step 2: Configure IP address(DHCP), FTP Server, Auto Execution files..., etc

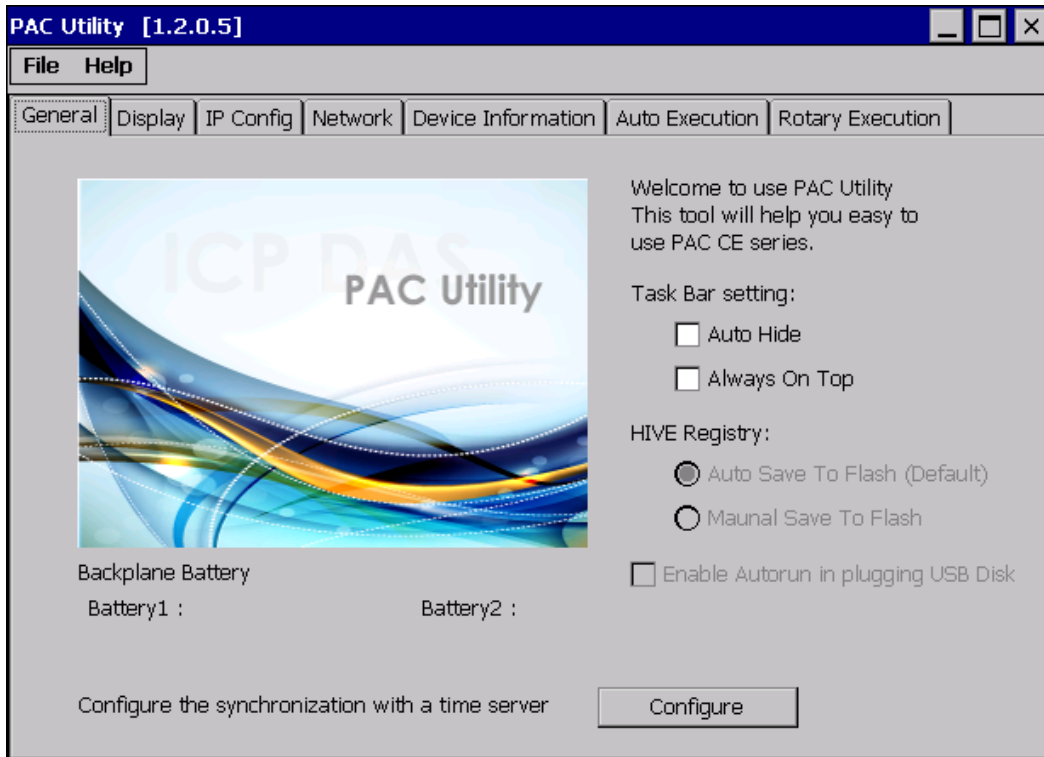


Step 3: Reboot the PAC



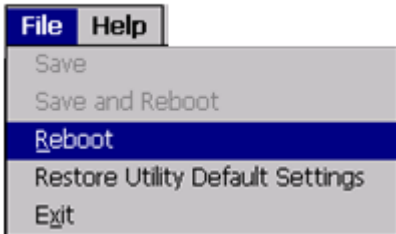
3.1. Functions of PAC Utility

The PAC Utility includes the following menu bars and property tabs. All of these functions will be explained as below.



Menu bar	Property Tab
<ul style="list-style-type: none"> ➤ File ➤ Help 	<ul style="list-style-type: none"> ➤ General ➤ Display ➤ IP Config ➤ Network ➤ Device Information ➤ Auto Execution ➤ Rotary Execution

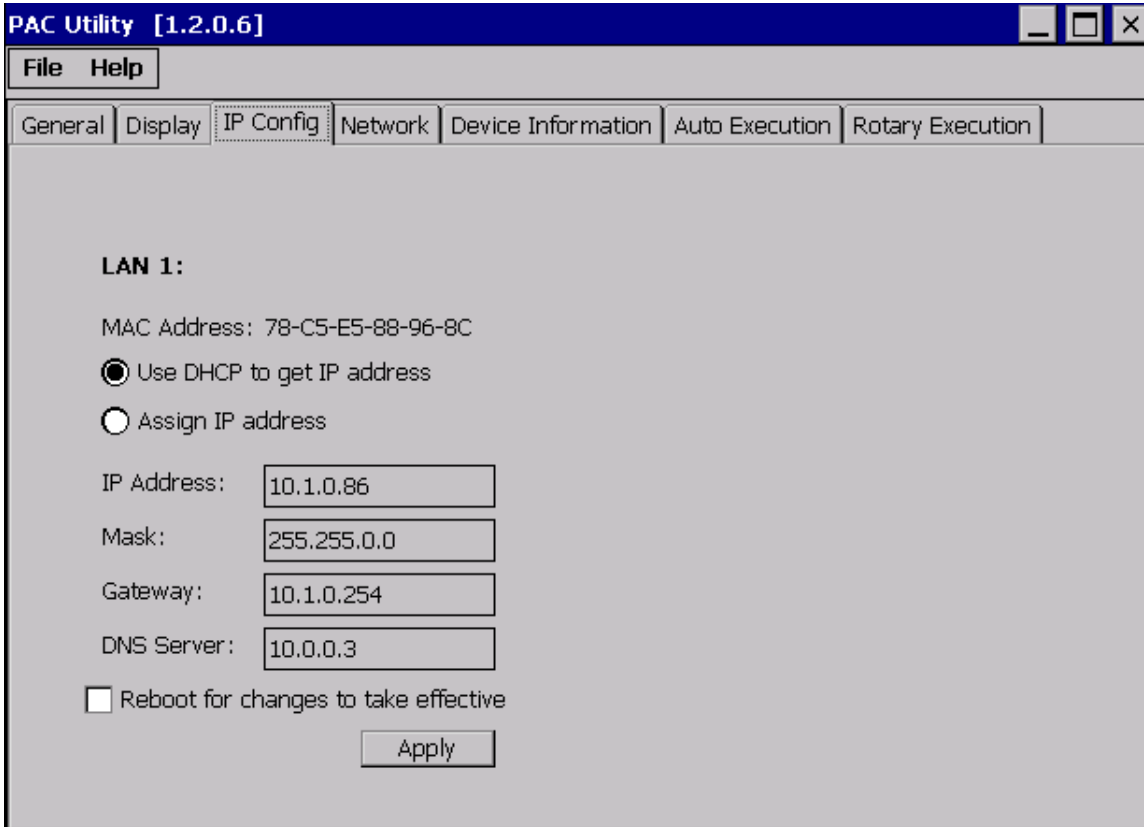
3.1.1. Menu Bar – File



The menus use to	How to use
Reboot	Restarts the PAC
Restore Default Settings	Restore the settings of PAC to its default.
Exit	Exits the PAC Utility.

3.1.2. Property Tab – IP Config

The IP Config tab provides functions to configure either DHCP (Roaming) or manually configured (Static) network settings and to monitor the MAC address. Generally, DHCP is the default settings, but if you don't have a DHCP server, you must configure the network settings by using manual configuration.



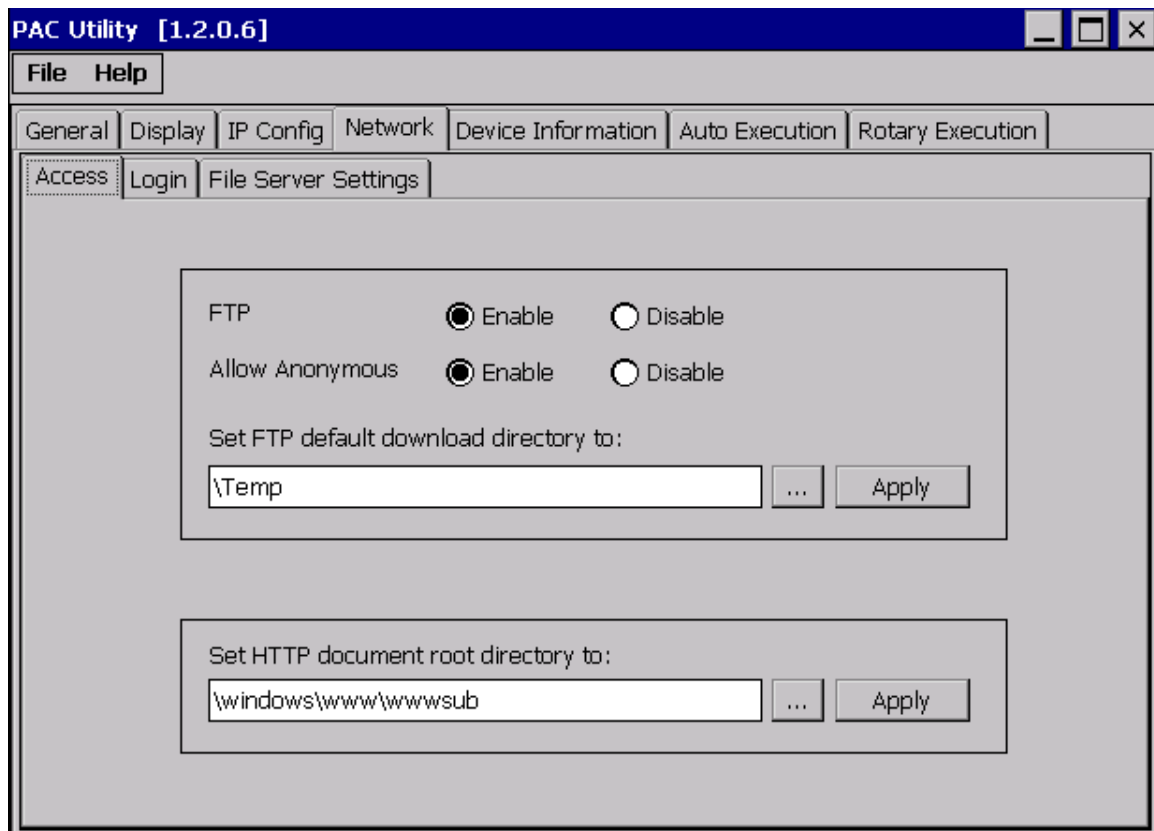
The menus use to	How to use
Set the network settings	<p>Use DHCP to get IP address: Select the Use DHCP to get IP address option, and then click the Apply button.</p> <p>Assign an IP address: Select the Assign IP address option, and then click the Apply button.</p>

3.1.3. Property Tab – Network

The Network tab include a common-use tab – Access tab.

Access Tab

The Access tab provides functions to enable/disable the FTP access, enable/disable anonymous FTP access, and configure the FTP and HTTP directory path.

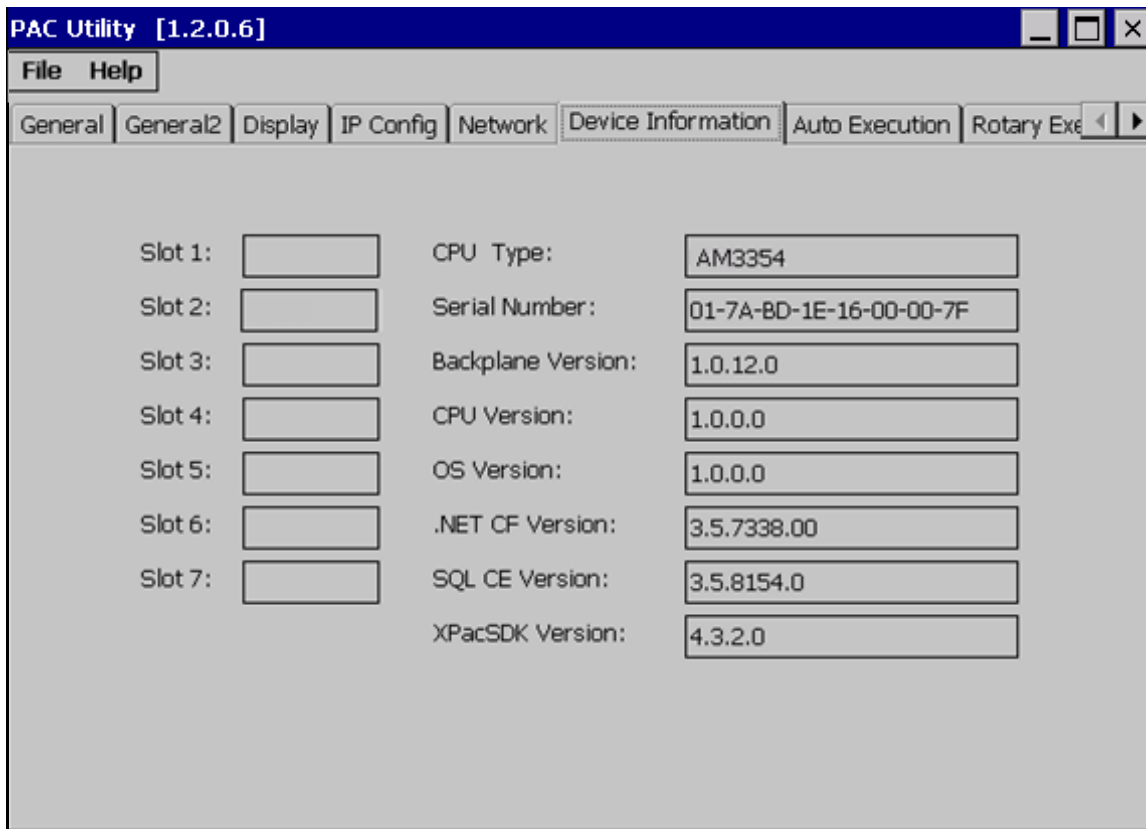


The menus use to	How to use
Enable or disable the FTP access	<p>Enable: Select the Enable check box in the FTP field, and then click the Apply button.</p> <p>Disable: Select the Disable check box in the FTP field, and then click the Apply button.</p>

The menus use to	How to use
Enable or disable anonymous FTP access	<p>Enable: Select the Enable check box in the Allow Anonymous field, and then click the Apply button.</p> <p>Disable: Select the Disable check box in the Allow Anonymous field, and then click the Apply button.</p>
Set the FTP directory path	Enter a new path in the Set FTP default download directory to: field, and then click the Apply button.
Set the HTTP directory path	Enter a new path in the Set HTTP document root directory to: field, and then click the Apply button.

3.1.4. Property Tab – Device Information

The Device Information tab provides functions to monitor necessary system information of the PAC. The information is the most important note of version control for upgrading system.



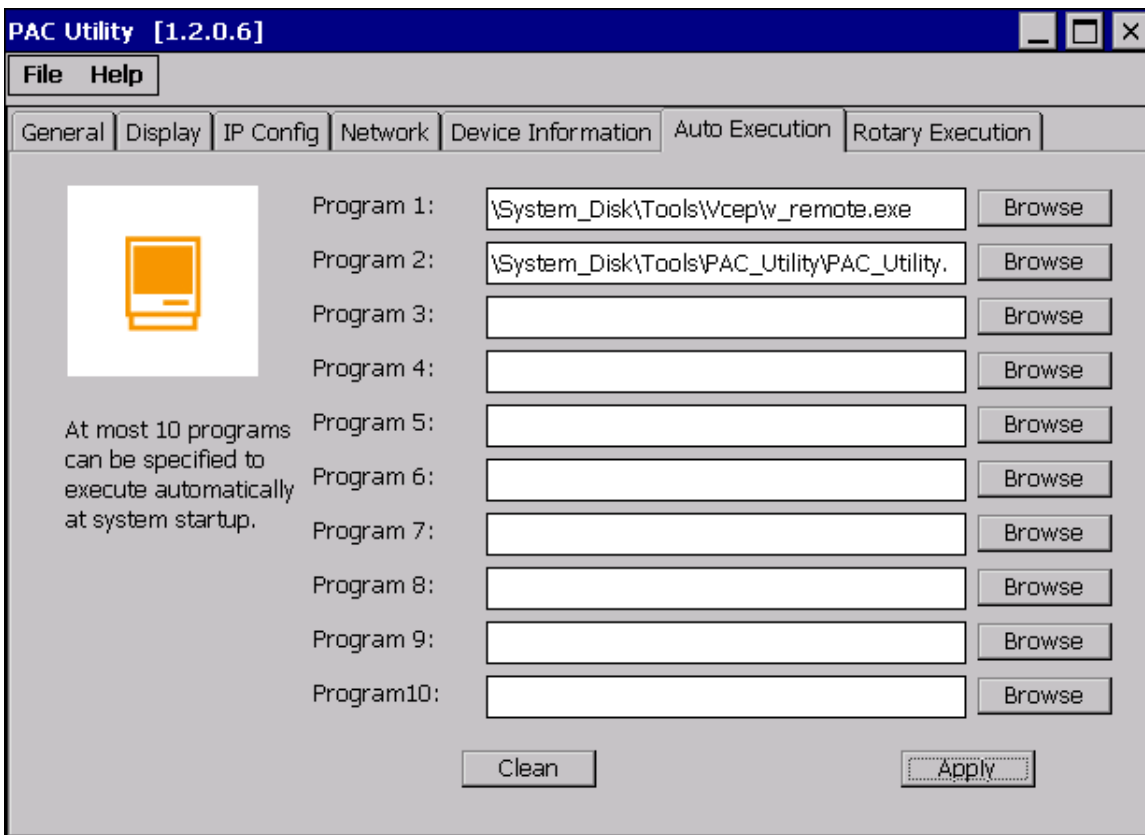
3.1.5. Property Tab – Auto Execution

The Auto Execution tab provides functions to configure programs running at PAC startup, it allows users to configure ten execute files at most.

Tips & Warnings



The specific extensions are .exe and .bat, and they are executed in order of program 1, program 2, ... etc.



The menus use to	How to use
Configure programs running at startup	Click the Browse button to select the execute file which you want, and then click the Apply button.

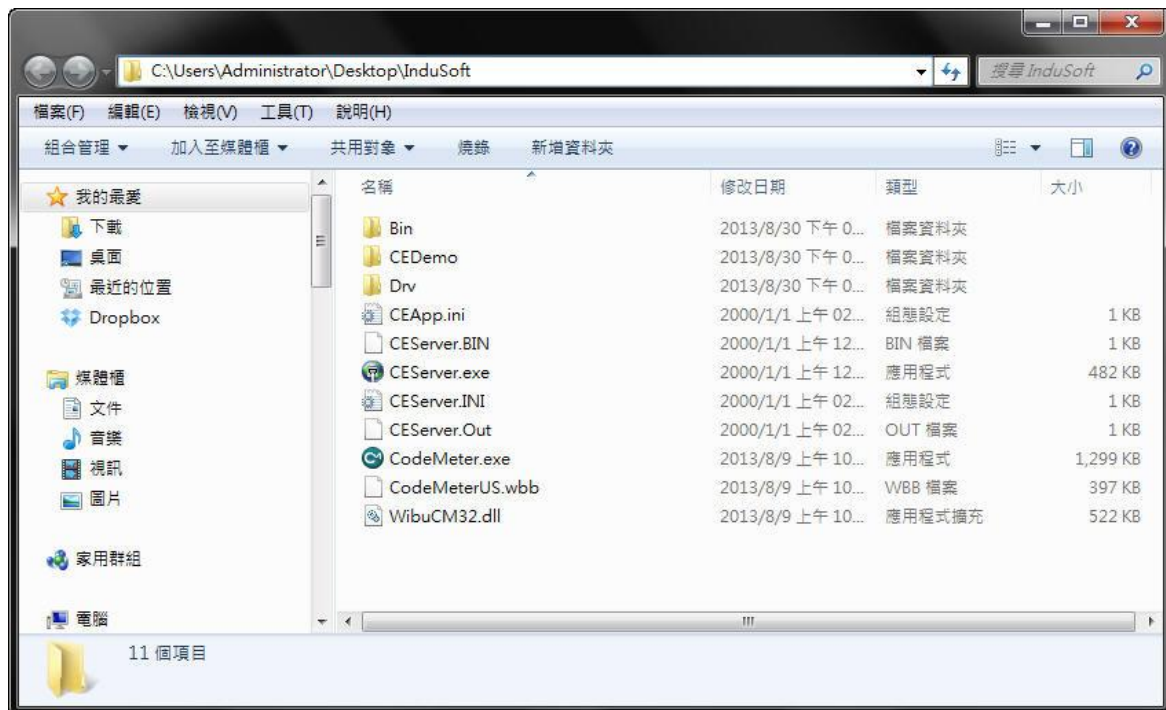
4. Update InduSoft Runtime Folder

InduSoft Runtime folder is pre-installed in the path, \Micro_SD\InduSoft or \System_Disk2\InduSoft, of PAC. If users want to update the runtime folder to the latest version, please follow the below steps.

Step 1 : Download the latest runtime folder from ICPDAS InduSoft website :

<http://www.icpdas.com/products/Software/InduSoft/indusoft.htm>

Step 2 : Unzip the compressed file.



Step 3 : Make sure both InduSoft project and CEServer process are closed on PAC. Delete or rename the original InduSoft runtime folder.

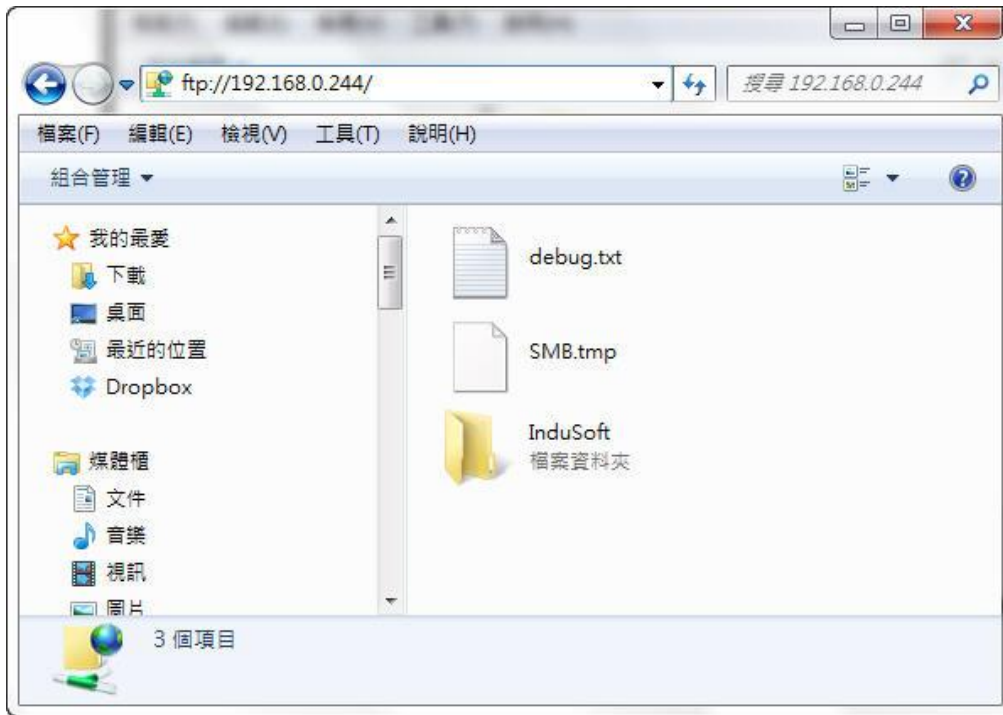
Step 4 : Make sure the connection between PAC and PC is normal.

(1) If you'd like to transfer files by FTP client software, please refer to Step 5.

(2) If you'd like to transfer files by USB flash drive, skip to Step 6.

Step 5 : Launch "My Computer", and type the PAC's IP address in the address bar (like <ftp://192.168.0.244/>) . Then copy Indusoft runtime folder to this window as below.

The default FTP path of PAC is **\My Device\Temp** and users need to copy it to the folder, **\Micro_SD** or **\System_Disk2**. Then the updating process is finished.



Step 6 : Copy the InduSoft runtime folder from USB disk to the path, **\Micro_SD** or **\System_Disk2** of PAC. Then the updating process is finished.

Tips & Warnings



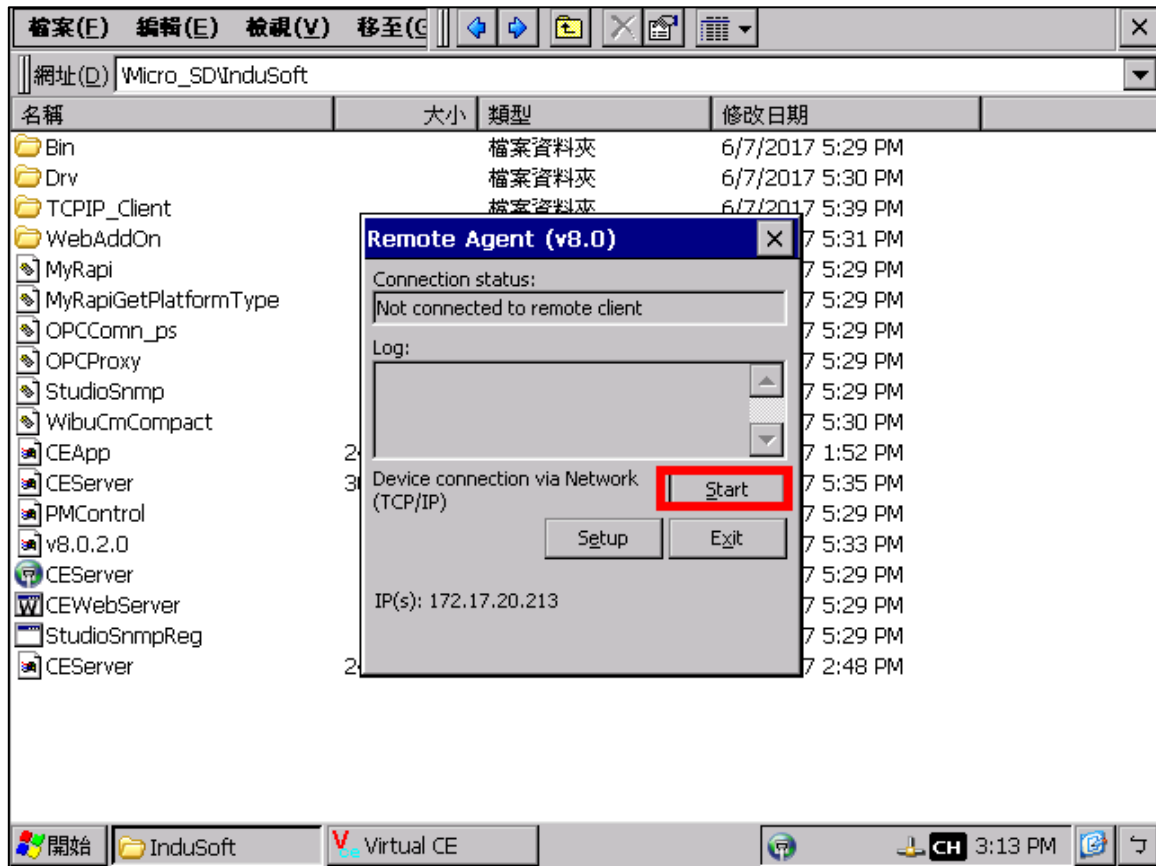
We suggest that both runtime folder and InduSoft IDE have the same version.

Softkey/ Hardkey License version	For InduSoft Runtime folder version
InduSoft v6.1	InduSoft v6.1.x.x
InduSoft v7.0	InduSoft v7.0.x.x
InduSoft v7.1	InduSoft v7.1.x.x
InduSoft v8.0	InduSoft v8.0.x.x

5. Run Your Project

5.1. Windows Embedded Compact

Refer to 【2. Download InduSoft Project to PAC】, After finishing Step 1~8, you can launch project from PC or PAC (Click 【Start】 from Remote Agent)



5.2. Windows Embedded Standard

As operating on PC, copy the project folder to WES platform via USB flash drive, and launch /Project Name/Project_Name.app.